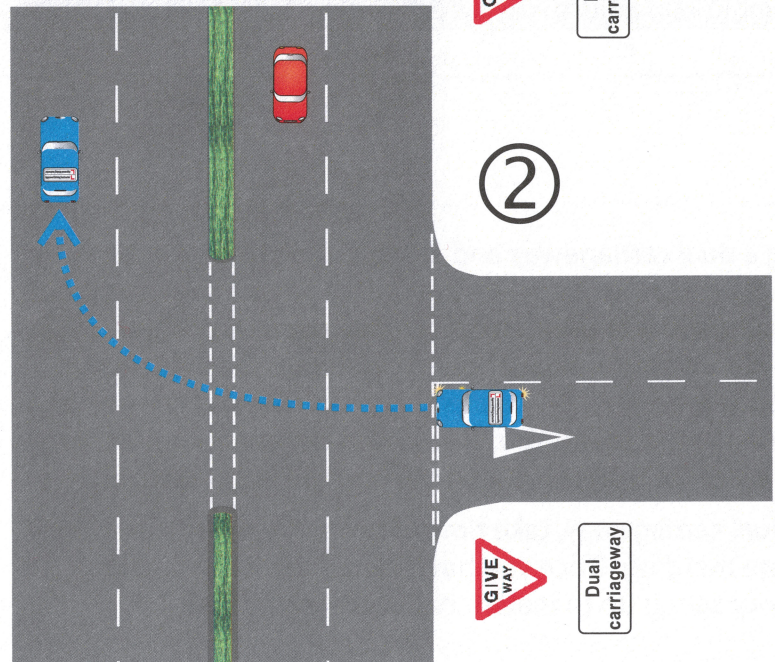


1



Dual
carriageway



2



Dual
carriageway

Turning right onto a dual carriageway

Before turning you need to assess the depth of the central reservation to see if it will protect the full length of your car. If the central reservation is deep enough, as in illustration 1, you should:

- treat each half of the carriageway as a separate road
- cross the first carriageway when it is safe to do so
- wait in a safe position within the central reservation
- proceed only when you have a safe gap in the traffic on the second carriageway
- use the MSM/PSL routine, indicating your intention to join the carriageway in good time

If the central reservation is not deep enough to protect the full length of your car, as illustration 2, you must:

- not proceed to cross until the carriageway is clear in both directions
- not emerge, if to do so would cause any other road user to change speed or direction

After you have joined the carriageway you should:

- take up your normal driving position in the left hand lane
- check your mirrors
- accelerate to an appropriate and safe speed for the road and traffic conditions
- not overtake until you are used to the road and traffic conditions of the new

Turning right from a dual carriageway

There will sometimes be gaps in the central reservation for turning right. You should:

- use the MSM/PSGL routine on approach
- signal right and move to the right-hand lane much earlier than normal because of the faster speeds
- look out for signs, lane markings and filter lanes on approach

Tip: Look for signs alerting you to a higher speed limit on the dual carriageway as this needs to be considered when assessing the speed of oncoming traffic.

With compliments from

Wayne Kriehn

www.learntodrive.uk.com

07961 312899 or 01428 654059
ADI Number 372505